

ACE

15 XW-F

Hydraulic Mobile Crane

Capacity : 15 tons
Engine Power : 108 bhp.

Rough terrain and rugged articulated pick 'n' move crane with front mounted cabin.

ACE INDIA'S NO. 1
WHEEL DRIVING COMPANY



Nothing beats an **ACE**

Specifications

15 XW-F

LIFTING CAPACITY	15 Tons
ENGINE	Kirloskar 4R1040TA4 BS-III, 4 cylinder, water cooled, Turbo charged / after cooled engine.
Max. Rating	108 BHP (80.9 kw) at 2500 RPM
TRANSMISSION	Heavy Duty Synchromesh with 8 Forward and 2 reverse speeds with high low range selector.
Axles	Front axle is rigidly mounted on the chassis and Rear axle is mounted with 2 Nos. leaf Springs.
Drive	2 / 4 Wheel drive.
Clutch	Heavy Duty, single, dry friction type.
Top Speed	40 KMPH on even metaled Road (without load)
Gradeability	40 % (unladen)
STEERING	Hydraulically operated steering wheel with 45° Articulation on either side and turning radius of 7.5 Mtrs (approx) on outer rear wheels.
BRAKES	Pneumatically operated dual circuit brakes on Front and Rear wheels. Parking brake is pneumatically operated spring actuated fail safe type.
HYDRAULIC SYSTEM	<ul style="list-style-type: none"> ● Intra Vane type Main Pump. Three spools control valve with built in Relief Valve. ● Suction line has 100 mesh size Strainer while return line is fitted with 25 micron full flow filter. ● Two double acting lift cylinders, one double acting extension cylinder with lock valve and two double acting steering cylinders.

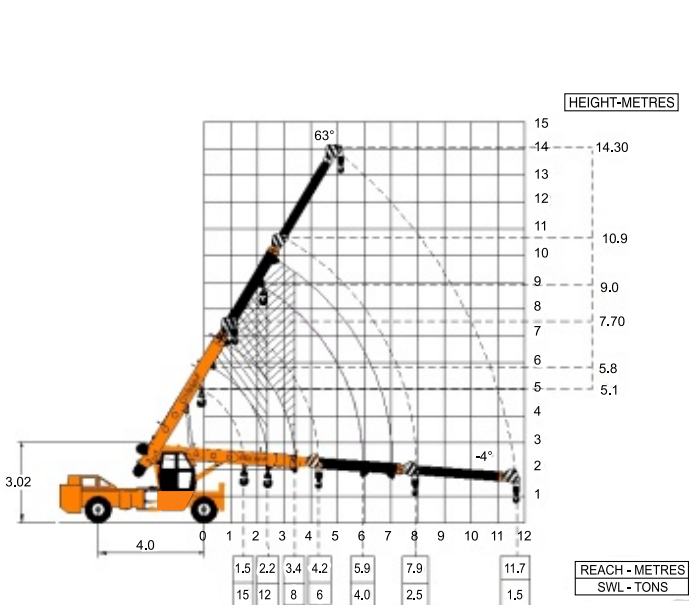
TELESCOPIC BOOM	4 part boom with 2 hydraulic and 1 manual extensions
BOOM LUFFING Range	- 1° to + 62°
HOIST	Driven by hydraulic motor employing 4 falls
ELECTRICAL SYSTEM	24v, Negative earth.
TYRES	11.00 x 20 - 16 PR (8 Nos.)
Wheel Base	4000 mm
Wheel Track	1825 mm
SAFETY	<ul style="list-style-type: none"> ● Audio overload indication ● Hose failure protection. ● Safety brakes on hoist. ● Cylinder guards ● Audio over hoisting indication
STANDARD EQUIPMENT	<ul style="list-style-type: none"> ● Fully enclosed wide view cabin. ● Front and rear work lights. ● Reflectors and Tool kit. ● Gauge:- <ol style="list-style-type: none"> a) Water temperature. b) Engine Oil pressure. c) Ammeter. d) RPM meter cum hour recorder.
OPTIONAL EQUIPMENT	<ul style="list-style-type: none"> ● 3 Part / 4 Part Boom ● Flyjib ● Front mounted hydraulically operated outriggers ● Spark arrestor. ● Spare wheel ● Safe load indicator
OPERATING WEIGHT	
Front axle	6300 Kgs.
Rear Axle	10300 Kgs.
Total Weight	16700 Kgs.

15 XW-F

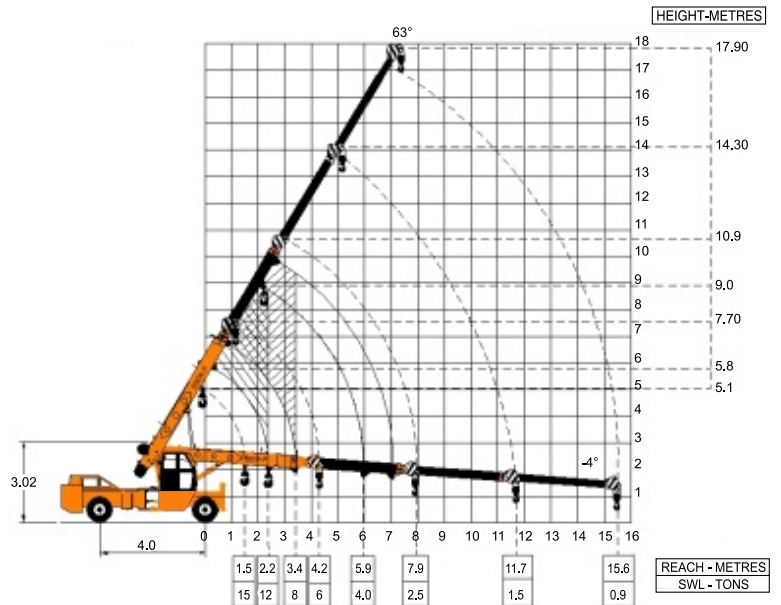


15 XW-F Crane with 4 part boom, outriggers and 4 wheel drive

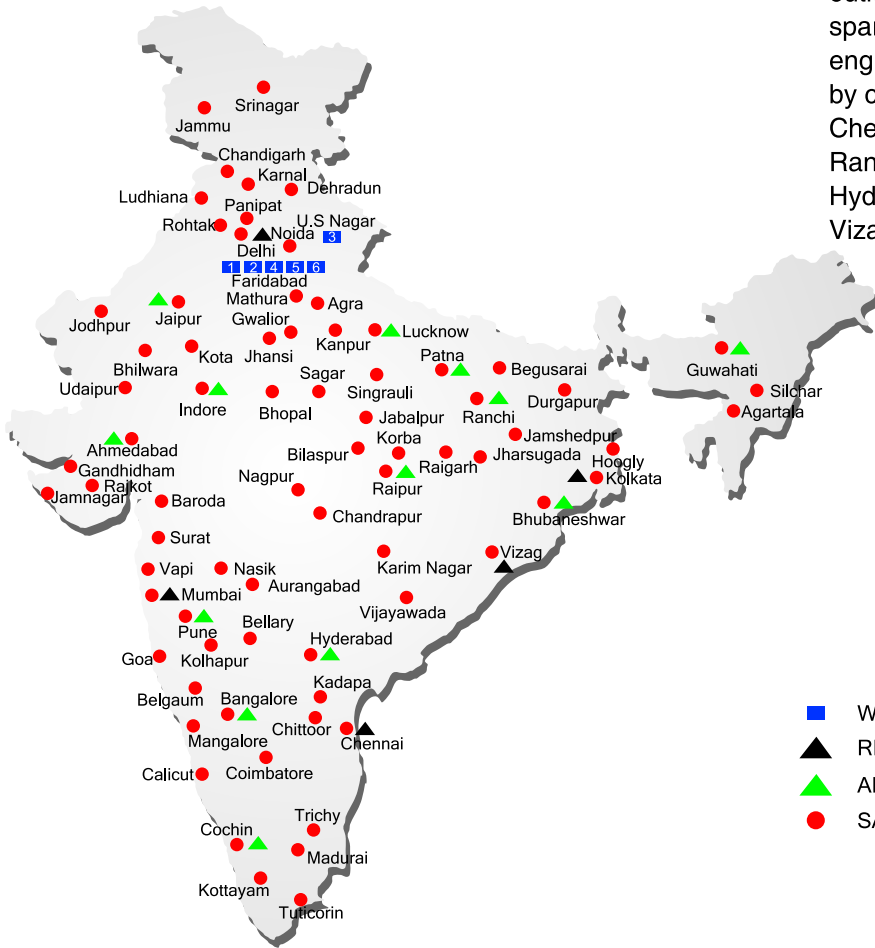
ACE 15 XW Model Crane fitted with 3 part boom



ACE 15 XW Model Crane fitted with 4 part boom



ALL INDIA NETWORK



SPARE PARTS & SERVICE

ACE has all India Sales and Service network operating out of all the major cities. These outlets are fully equipped to provide genuine spare parts and services by company trained engineers. These outlets are further supported by company officials based at Delhi, Mumbai, Chennai, Kolkatta, Ahmedabad, Pune, Jaipur, Ranchi, Raipur, Indore, Bhubneshwar, Lucknow, Hyderabad, Bangalore, Guwahati, Patna, Vizag & Cochin

- WORKS
- ▲ REGIONAL OFFICES
- ▲ AREA OFFICES
- SALES AND SERVICE DEALERS



Action Construction Equipment Ltd.

Contact:



ACE / Original equipment manufacturer reserves the right to alter any specifications without prior notice. Dimensions, weights & capacities mentioned herein are variable by ±5%. Accessories shown are not part of the Standard Equipment.

MARKETING H.Q.

5 th Floor, "TDI Center", Jasola , New Delhi - 25
 Ph.: +91-11-40549900 (30 Lines) Fax : 40549922
 E-mail: marketing@ace-cranes.com

MUMBAI OFFICE

31, "Kalpataru Court", Chembur, Mumbai - 71
 Ph.: 022 - 25206846 Telefax : 25207071
 E-mail: acemumbai@ace-cranes.com

KOLKATA OFFICE

"Fomra Towers" 84-A, Second Floor, AJC Bose Road,
 Kolkatta - 14. Ph. 033-32578307, Telefax: 22274428
 E-mail: acekolkatta@ace-cranes.com

CHENNAI OFFICE

1st Floor, "Alsa Regency", 165, Eldams Road,
 Alwar Pet, Chennai - 18
 Ph.: 044 - 24314253 Telefax : 24314252
 E-mail: acechennai@ace-cranes.com



www.ace-cranes.com